

# Specialty Tools

## Zeus Form Knurling Tools

Optimal solutions for knurling applications.



### Unbeatable benefits:

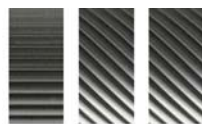
- **High precision** for excellent knurling profiles. Low radial pressure on the work piece
- **Easy tool handling** and adjustment of work piece diameter. With scale for setting the work piece  $\varnothing$
- **Rigid tool design** offers high process safety and excellent knurling quality.
- **Knurling wheel options:** PVD coatings for increased wheel life
- **Special surface hardening** of the tool shank for increased tool life (nitriding)
- **Application oriented** tool solutions. Suitable for small machines and small work piece diameters.



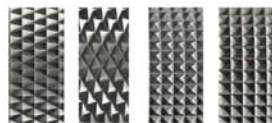
Best Example:  
Zeus RD2

### Tool Series:

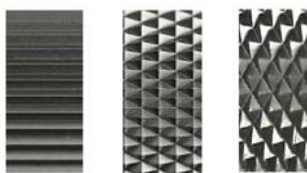
#### RD1



All knurling profiles possible

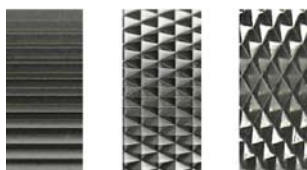


#### RD2



RAA  
RGE30°  
RGE45°

#### RD3



RAA  
RGE30°  
RGE45°

# Specialty Tools

**Zeus Form Knurling Wheels** guarantee an optimal tool life, high precision and absolute process safety:



- **Teeth fine milled, front and bore ground:** high quality of knurling pattern
- **Vacuum hardened:** increase in tool life
- **Knurling wheel options:** PVD coatings for increased wheel life (✓)
- **Exclusive product range**



Form AA



BL 30°



BR 30°



BL 45°



BR 45°



GE 30°



GE 45°



KE

Variations	Type	Ø x width x bore			Pitch p - Profile angle a
No. 10 / milled, with chamfer, HSS ✓	AA	10	3	6	0,3 - 90°
No. 11 / milled, with chamfer, PM ✓	BL30	10	4	4 ✓	0,4 - 90°
No. 12 / milled, without chamfer, HSS ✓	BL45	15	4	4 ✓	0,5
No. 13 / milled, without chamfer, PM ✓	BR30	15	4	8	0,6
No. 30 / ground, with chamfer, PM ✓	BR45	15	6	4 ✓	0,7 - 90°
No. 32 / ground, without chamfer, PM ✓	GE30	15	6	6/8 ✓	0,8
No. 50 / ground, with chamfer, HM ✓	KE	15	6	6/11 *	0,9
No. 52 / ground, without chamfer, HM ✓		20	6	6 ✓	1,0
		20	8	6 ✓	1,2
		20	8	6/13 ✓	1,5
		20	8	10/12 ✓	1,6
		20	10	6 ✓	1,8
		25	6	6 ✓	2,0 - 90°
		25	6	8 *	cp 8 - 90°
		25	8	6 ✓	cp 10
		25	10	6 ✓	cp 12
		5/16	5/32	1/8 ✓	cp 14 - 90°
		1/2	3/16	3/16 ✓	cp 16
		1/2	1/4	3/16 ✓	cp 18
		5/8	5/16	7/32 ✓	cp 19
		5/8	1/4	1/4 ✓	cp 20 - 90°
		3/4	3/8	1/4 ✓	cp 21
		3/4	1/2	1/4 ✓	cp 24
		7/8	3/8	1/4 ✓	cp 25
		1	3/8	5/16 ✓	cp 29
		1 1/4	1/2	1/2 ✓	cp 30
					cp 32
					cp 33
					cp 35 - 70° / 90°
					cp 40 - 70° / 90°
					cp 41 - 90°
					cp 47 - 90°
					cp 50 - 70°
					cp 60 - 70°
					cp 70 - 70°
					cp 80 - 70°
					cp 90 - 70°
					cp 100 - 70°
					dp 64 - 80°
					dp 96 - 80°
					dp 128 - 80°
					dp 160 - 80°

Please choose your options by combining the four columns accordingly.

\*With chanks 60° for knurling tool RD2

HSS = High Speed Cutting Steel  
PM = Powder metallurgy Steel  
HM = Carbide

